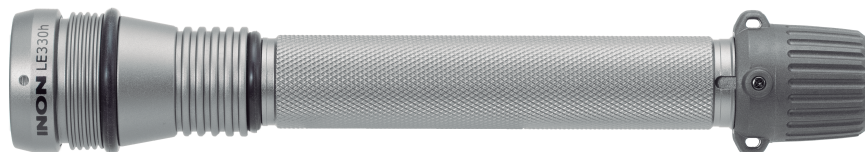


## High CRI, High Color Temperature LED Flashlight

## LE330h

Assured Reliability, Waterproof Property for Professionals  
Durable High-CRI Handy Light for Land, Underwater Use



Color rendering index  
90



Color Temperature  
6500K



Battery  
3xAA



Max. Brightness  
330lm



Beam Angle  
30°



Run Time  
160 min

### ● High CRI LED chip for underwater imaging

Renewed LED module delivers high CRI (approx. Ra 90) and high color temperature of 6500K to reproduce natural color of a subject to use as ideal lighting source with further refined light for macro imaging and strobe photography as a focus light.

### ● Ideal Color Temperature as Target Light

Rated color temperature is calibrated at 6500K which is close to color tone of strobe to blend right in with strobe photography.

### ● Durable, Underwater/Land Use LED Light

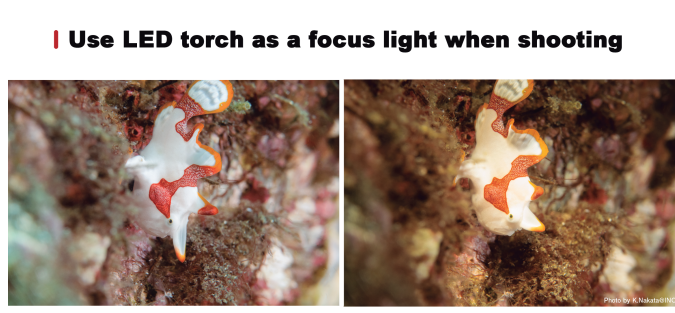
Maximum 330 lumen with 30 degree coverage. Bright beam supports you during night diving and usable as a pointer as well. Optional filters further utilize the LE330h as photographic light. The LE330h is useful on land as well to use in wide variety of outdoor activities like camping, mountaineering, cycling, sailing, trekking etc.

### ■ Color Tone Difference (as primary lighting)



by LE600h-S | Quality LED module Higher CRI/Color Temperature | Ordinary LED module by LE700-S  
SONY DSC-RX100M5A/INON UCL-90M67 Av, 1/500 s, f8, ISO250, No flash, 70mm(35 mm film equiv.)

### ■ Color Tone Difference (as target light)



Quality LED module Higher CRI/Color Temperature | Ordinary LED module  
By LE600h-S + D-200 | By LE700-S + D-200

SONY DSC-RX100M5A/INON UCL-90M67 AWB, Tv, 1/30 s, ISO250, fill-in flash, 70mm 35mm film equiv.